



# City of San Leandro

Meeting Date: June 15, 2020

## Staff Report

---

**File Number:** 20-238

**Agenda Section:** CONSENT CALENDAR

**Agenda Number:** 8.M.

**TO:** City Council

**FROM:** Jeff Kay  
City Manager

**BY:** Debbie Pollart  
Public Works Director

**FINANCE REVIEW:** Liz Warmerdam  
Interim Finance Director

**TITLE:** Staff Report for a City of San Leandro City Council Resolution to Approve and Authorize the City Manager to Purchase Two- 2020 Model Year Ford Super Duty F-350 XL 2WD Regular Cabs from National Auto Fleet Group at a Price of \$53,700.16 and \$58,816.68; to Purchase One Effer Model 175/5S Articulating Crane Truck with Altec Industries, Inc. for \$205,925.00; and to Purchase One 2021 Model Year International MV607 SBA Chassis with Peterson Trucks, Inc. for \$134,800.79, all Four of Which Will Be Purchased Through Sourcewell, a Cooperative Contract Purchasing Agency; and to Appropriate \$237,948.64 from the Equipment Repair and Maintenance Internal Service Fund Balance to the Vehicle Replacement Fund

---

### SUMMARY AND RECOMMENDATIONS

Staff recommends that the City Council approve and authorize the City Manager to purchase four replacement vehicles (replacing existing vehicles that are due or past due for replacement), with three different vendors and all through Sourcewell, a cooperative contract purchasing agency. The total purchase amount for all four vehicles is \$453,242.63. Staff also recommends that the City Council approve appropriation of \$237,948.64 from the Equipment Repair and Maintenance Internal Service Fund balance to the Vehicle Replacement Fund in order to complete the purchases.

### BACKGROUND

The replacement vehicles are located in four separate Public Works sections: Waste Water Collections (sewer rodder truck purchased in 2004 and due for replacement in 2017); Plant Maintenance (crane truck purchased in 2004 and due for replacement this year); Streets (1/2 ton truck used for illegal dump pick-ups, purchased in 2008 and due for replacement in 2019); and Facilities (1-ton stake bed truck, purchased in 2006 and due for replacement in 2019).

The Garage section was understaffed for much of last year, which resulted in a delay in preparing

replacement vehicles specifications for Fiscal Years 2018 and 2019. Additionally, equipment is sometimes deferred if the existing stock is in good running condition, has low mileage/usage, or perhaps if a new product specification is coming in a future model year. In the current Fiscal Year, the City has already purchased \$1.1 million in vehicles and equipment and has encumbered \$1.3 million for vehicles and equipment for a total year-to-date amount of \$2.4 million in vehicle and equipment purchases. Adding this request for approval, the City will expend a total of \$2.8 million for vehicles and equipment in Fiscal Year 2019-20.

### **Analysis**

Sourcewell (formally known as the National Joint Powers Alliance - NJPA) is a municipal contracting agency that creates cooperative contract purchasing solutions on behalf of over 50,000-member entities including government, education and non-profit agencies nationwide. Utilizing Sourcewell, staff procured a bid from National Auto Fleet Group located in Watsonville, CA for the Streets and Facilities trucks; procured a bid from Altec, a national company with a local office in Dixon, CA for the Plant Maintenance crane truck; and procured a bid from Peterson Trucks, Inc. located in San Leandro for the Collections rodder truck (chassis only - the existing mounted equipment will be placed onto the new chassis).

The two trucks will be Fords, which a majority of the City's light-duty vehicles are. All of the crane trucks purchased in the past few years have been Altec's, and the large hauling truck purchased last year for paving operations was an International. Having a consistent fleet make-up helps keep maintenance costs in check by being able to purchase equipment parts in quantity.

### **Budget Authority**

The Vehicle Purchasing Account 690-16-002-7510 has a balance of \$215,293.99. Staff requests an additional appropriation of \$237,948.64 from the Equipment Repair and Maintenance Fund balance to the Equipment Repair and Maintenance Fund to cover the remaining cost of the replacement vehicles. Combined, these funds will cover the total cost of the vehicles of \$453,242.63

## **ATTACHMENT**

### **Attachments to Staff Report**

- Equipment Quotes (4)



Altec Industries, Inc.

Opportunity Number:  
 Quotation Number:  
 Sourcwell Contract #: 012418-ALT  
 Date: 5/27/2020

Quoted for: CITY OF SAN LEANDRO, CA

Customer Contact:

Phone: / Email:

Quoted by: WILLIAM EDWARDS

Phone: / Email:

Altec Account Manager: WILLIAM HAMBURGER

**REFERENCE ALTEC MODEL**

175T	175 four section knuckleboom crane	\$156,850
------	------------------------------------	-----------

**(A.) SOURCEWELL OPTIONS ON CONTRACT (Unit)**

1		
2		
3		
4		

**(A1.) SOURCEWELL OPTIONS ON CONTRACT (General)**

1		
2		
3		
4		
5		
6		
7		
8		
<b>SOURCEWELL OPTIONS TOTAL:</b>		\$156,850

**(B.) OPEN MARKET ITEMS (Customer Requested)**

1	UNIT	EFFER EC175-5S REARMOUNTED CRANE	\$20,500
2	UNIT & HYDRAULIC ACC	FULL SUBFRAME	\$5,600
3	BODY		
4	BODY & CHASSIS ACC		
5	ELECTRICAL	TWO SPOT LIGHTS IN INSTALLED ON BULKHEAD	\$2,450
6	FINISHING		
7	CHASSIS	2021 INTERNATIONAL MV607 IN LIEU OF FREIGHTLINER	\$12,996
8	OTHER		
<b>OPEN MARKET OPTIONS TOTAL:</b>			\$41,546

**SUB-TOTAL FOR UNIT/BODY/CHASSIS: \$198,396**  
**Delivery to Customer: \$7,529**  
**TOTAL FOR UNIT/BODY/CHASSIS: \$205,925**

**(C.) ADDITIONAL ITEMS (items are not included in total above)**

1		
2		
3		
4		

\*\*Pricing valid for 45 days\*\*

**NOTES**

**WARRANTY:** Standard Altec Warranty for Aerials and Derricks - One (1) year parts warranty One (1) year labor warranty Ninety (90) days warranty for travel charges (Mobile Service) Limited Lifetime Structural Warranty. Chassis to include standard warranty, per the manufacturer.

**TO ORDER:** To order, please contact the Altec Account Manager listed above.

**CHASSIS:** Per Altec Commercial Standard

**DELIVERY:** No later than 360 days ARO, FOB Customer Location

**TERMS:** Net 30 days

**BEST VALUE:** Altec boasts the following "Best Value" features: Altec ISO Grip Controls for Extra Protection, Only Lifetime Warranty on Structural Components in Industry, Largest Service Network in Industry (Domestic and Overseas), Altec SENTRY Web/CD Based Training, Dedicated/Direct Gov't Sales Manager, In-Service Training with Every Order.

**TRADE-IN:** Equipment trades must be received in operational condition (as initial inspection) and DOT compliant at the time of pick-up. Failure to comply with these requirements, may result in customer bill-back repairs.

**BUILD LOCATION: ALTEC NORTHEAST**

Copy of Sourcwell (formerly NJPA) Quote Template 5-13-2019.xlsx



Northeast LLC –  
Phone: 916-996-3503  
Email: Patrick @efferusa.com

May 20, 2020

## **UPDATED SPECIFICATIONS FOR CITY OF SAN LEANDRO**

We are pleased to propose the following equipment for your consideration.

### **EFFER® MODEL 175/5S ARTICULATING CRANE:**

- Crane mounted behind the rear wheels.
- Effer crane with capacity of 1,695 lbs. @ 47'10" horizontal, see load chart for details.
- Danfoss, proportional compensated, four section multi- function controlbank.
- Self-supported single stage extensions cylinders with sequence valves, end stroke shock absorbers, and HSS (High Speed System), regenerating valve.
- Scanreco radio remote controller and with additional battery and charger. Charger mounted inside truck cab within easy reach of the operator.
- Effer DMU 3000 overload safety device with ESS Effer Stability System
- Rotation by rack and pinion 400 degrees
- Exclusive ETL (Effer Twin Links) double link-rod system. With 14° EXTRA LIFT system device on the fly jib
- Fabricated, welded crane base pedestal.
- Hydraulic out and hydraulic down crane based stabilizers with manual swing up device, with minimum of 235" spread, and ball joint adaptors. Supplementary stabilizer installed under the bed, behind the truck cabin.
- Thermostatically controlled oil cooler, mounted in the crane space.
- Effer oil reservoir 21 gallons mounted in the crane space
- Hydraulic valve bank configured for a variable displacement pump.
- Holding valves directly flanged to cylinder barrels.
- 8.0 Ton Load hook.
- ANSI safety decals, USA Load charts.
- Painted with two stage paint Effer yellow.
- Design according to UNI EN 12999 HC1 S1 regulations.

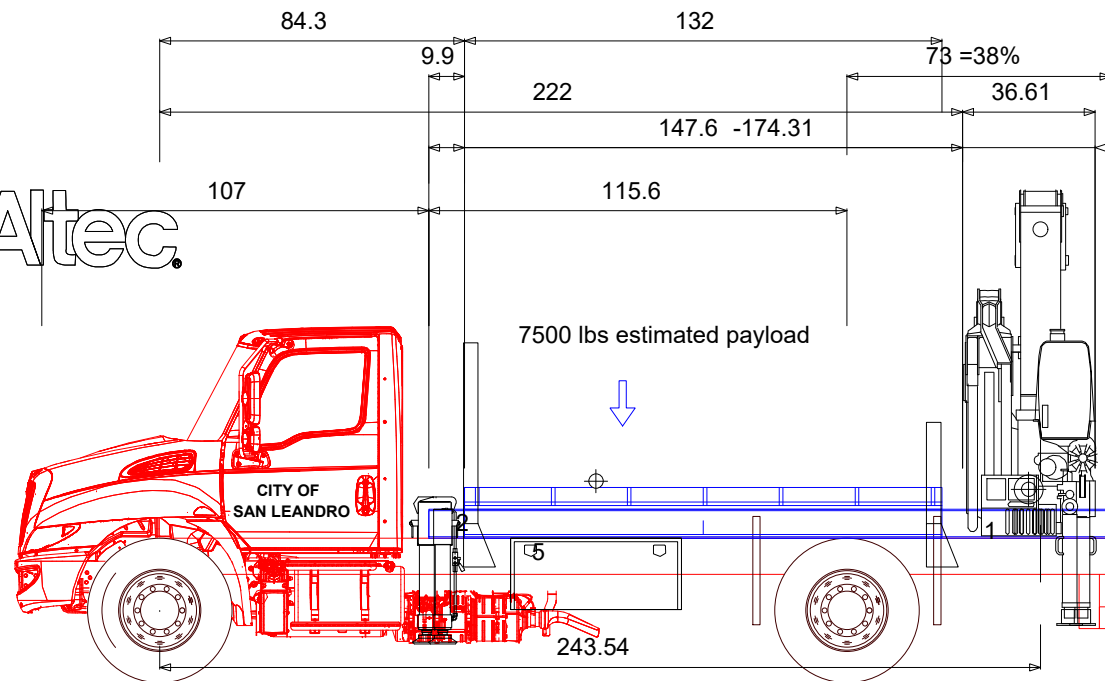
### **INSTALLATION, AND BODY SPECIFICATIONS:**

- Install Effer model 175/5S according to manufacturer installation procedures, behind the rear axle.
- Full length all steel subframe to connect crane to supplementary stabilizers.
- All steel 132" long x 96" wide flatbed body. Painted high gloss black.
- All steel approximately 58" tall cab protector, with steel mesh cut out for rear window.
- Rear crane protection wall in front of the crane, approximately 24" tall. Shall be removable bolt on style.

- Full length side rub rails with stake pockets.
- Tie down winches on sliding rails on both side of the body.
- Two all steel 24" x 24" x 48" underbody tool compartments with dual handles and locks. Painted high gloss black.
- 2 front and 2 rear facing amber/white flashing lights (Whelen ION type)
- Whelen PAR36 flood lights mounted to top corners of cab protection headboard/.
- ICC underride bumper at rear.
- All required FMVSS legal lighting in LED.
- All DOT and ICC required equipment provided.
- Final proof test and run-in of all components, provide quality control inspection.
- Provide and install four composite foot plates and holders.
- Provide and install system variable displacement hydraulic pump
- Provide and install PTO for automatic transmission
- Provide and install remote controlled engine start stop feature.

### **CAB CHASSIS:**

- New model year International model MV 607 SBA regular day cab, white.
- 12,000 lbs. FAWR
- 21,000 lbs. RAWR
- Truck GVWR rated at 26,000 lbs.
- Approximate wheelbase of 190" with 75" after frame.
- 120,000 PSI steel truck frame
- Cummins L9 350 HP diesel engine
- Air brakes with ABS
- Allison 6 speed automatic transmission with PTO outlet
- 50 gallon fuel tank drivers side
- Batteries under cab passenger side.
- Air ride driver and passenger bucket seats.
- AM/FM with air conditioning
- Exhaust with horizontal tailpipe, no protrusion behind cab.
- Factory PTO switch on dashboard
- Remote engine start stop, and body builder components.
- Max engine 1000 RPM upon PTO engagement.
- Final chassis specifications to follow.



Effer model 175/5S  
see load chart

Chassis tare  
weights estimated.



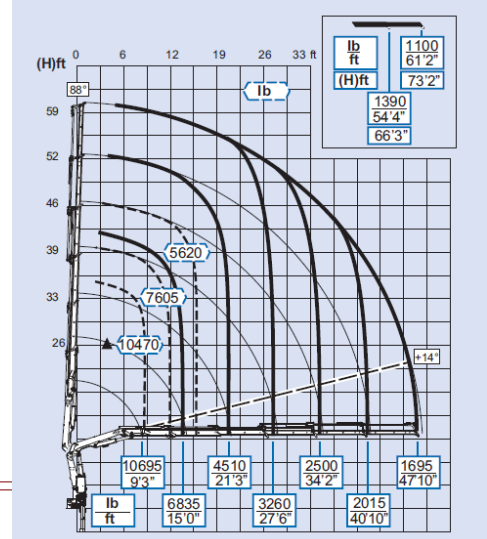
Unloaded	6766 { 31% }	14727	= 21493 lbs
loaded	9213 { 32% }	19780	= 28993 lbs
Max	12000	21000	= 33000 lbs

**NOTICE**

This drawing is for the purpose of the illustration of a concept. The weights, distribution and stability is based upon estimated weights and is only as accurate as the information provided. Actual weights will change the final results. Cab chassis, body, and accessory weights are estimated. There will be numerous changes to the final result. Consult with local and State authorities for allowable axle loading. The crane unit is non-insulated. This drawing is copyrighted and shall not be reproduced without permission.

CITY OF SAN LEANDRO  
FREDDY BARAJAS  
International mv 607 4x2

EFFER 175 / 5S  
EFFER 9261106A  
Cab protection wall  
Crane protection wall





# National Auto Fleet Group

A Division of Chevrolet of Watsonville

490 Auto Center Drive, Watsonville, CA 95076

(855) 289-6572 • (831) 480-8497 Fax

Fleet@NationalAutoFleetGroup.com

12/9/2019

5/19/2020 Re-Configured

Quote ID: 21733 R4

Order Cut Off Date: TBA

Freddy Barajas  
City of San Leandro  
Equipment Service

14200 Chapman Rd

San Leandro, California, 94578

Dear Freddy Barajas,

National Auto Fleet Group is pleased to quote the following vehicle(s) for your consideration.

**One (1) New/Unused (2020 Ford Super Duty F-350 DRW (F3G) XL 2WD Reg Cab 145" WB 60" CA, Scelzi Body Proposal 203879 9'6" Long x 86" Wide)** and delivered to your specified location, each for

#### One Unit

Contract Price	\$32,181.94
Scelzi Body Proposal 203879	\$21,400.00
9'6" Long x 86" Wide	
Tax (9.7500 %)	\$5,224.24
Tire fee	\$10.50
Total	\$58,816.68

- per the attached specifications. Price includes 2 additional key(s).

This vehicle(s) is available under the **Sourcewell (Formerly Known as NJPA) Contract 120716-NAF**. Please reference this Contract number on all purchase orders to National Auto Fleet Group. Payment terms are Net 20 days after receipt of vehicle.

Thank you in advance for your consideration. Should you have any questions, please do not hesitate to call.

Sincerely,

Jesse Cooper  
Account Manager  
Email: Fleet@NationalAutoFleetGroup.com  
Office: (855) 289-6572  
Fax: (831) 480-8497



GMC

**In order to Finalize your Quote, please submit this purchase packet to your governing body for Purchase Order Approval. Once you issue a Purchase Order please send by:**

**Fax: (831) 480-8497**

**Mail: National Auto Fleet Group  
490 Auto Center Drive  
Watsonville, CA 95076**

**Email: Fleet@NationalAutoFleetGroup.com**

**We will then send a W-9 if you need one**

**Please contact our main office with any questions:  
1-855-289-6572**





2286 E. Date Ave.  
 Fresno, CA 93706  
 Phone: 559-237-5541  
 Fax: 559-237-5554  
 www.SEINC.com

# Quotation

203879

User: Uribe, Ruben

**Bill To:** NATIONAL AUTO FLEET GROUP  
 Attn: CARROLL, NEIL  
 490 AUTO CENTER DR.  
 WATSONVILLE, CA 95076  
 1-855-289-6572

**Ship To:** NATIONAL AUTO FLEET GROUP  
 Attn: CARROLL, NEIL  
 14200 CHAPMAN ROAD  
 SAN LEANDRO, CA 94578  
 1-855-289-6572

<b>Quote Date:</b>	05/19/2020	<b>Salesman:</b>	Uribe, Ruben
<b>Expiration Date:</b>	06/18/2020	<b>Ship Via:</b>	SCELZI DELIVERY
<b>Sales Tax</b>	Exempt @ 0.000%	<b>Terms:</b>	Net 30 w/ PO
		<b>PO Number:</b>	

**Notes:**

PAINT BODY WHITE  
 AFT AXLE FUEL TANK - GAS

\*\*\* RE: CITY OF SAN LEANDRO \*\*\*

Qty	Part Number	Description	Total	Tax
1	Customer Chassis	2020, FORD, F350, REG CAB, WHITE, GAS DRW 60" CA	\$0.00	



2286 E. Date Ave.  
 Fresno, CA 93706  
 Phone: 559-237-5541  
 Fax: 559-237-5554  
 www.SEINC.com

**Quotation**

203879

User: Uribe, Ruben

1	DUMP	9' 6" LONG X 86" WIDE INSIDE X 13" SIDES X 20" TAIL GATE X 32" BULKHEAD 10 GA. HIGH TENSILE STEEL THROUGHOUT 32" BULKHEAD WITH SINGLE CORRUGATION AND PERFORATED WINDOW "NO" TAILGATE 13" TALL FOLD DOWN SIDES 4 FLANGED BOXED TOP RAIL FRONT CORNER POST BEVELED FLOOR CORNER AT FRONT 3" CHANNEL CROSSBARS ON 15" CENTERS 5" CHANNEL LONG SILLS 1/4 SIZE CAB SHIELD REAR MUD FLAPS LED LIGHT PACKAGE (OVAL AND MARKER LED, OEM INCANDESCENT)  1EA - SCELZI SEMI-AUTOMATIC TARP SYSTEM WITH BLACK MESH TARP  *** NOTE: FACTORY BACKUP ALARM ***  1EA - HOIST: SCELZI CS615T-11 ELECTRIC OVER-HYDRAULIC UNDERBODY HOIST, CLASS 40 12.6 TON CAPACITY WITH 12" OVERHANG, FULL STEEL SUB-FRAME DOUBLE ACTING, POWER UP/DOWN, PTO AND DIRECT MOUNT PUMP LED BODY RAISED WARNING LIGHT, SINGLE BODY PROP IN CAB CONTROL  1EA - TOMMYGATE 1600LB CAPACITY LIFT-N-DUMP LIFT GATE MODEL # G2-92-1650 LD33 WITH 83" X 33" LOADABLE PLATFORM AREA PLUS 6" TAPER AND IN CAB SHUT OFF SWITCH - PAINTED WHITE  1EA - CLASS 5 DUMP HITCH WITH CLASS 4 REDUCER INSERT  1EA - TRAILER PLUG 7/4 OEM SOCKET	\$20,752.00
1	PDI	PRE-DELIVERY INSPECTION OF VEHICLE PER WORK ORDER	\$150.00
1	HAZ MAT - HWD FEE	HAZARDOUS WASTE DISPOSAL FEE	\$30.00
1	WEIGHT CERTIFICATE	WEIGHT CERTIFICATE OF COMPLETED UNIT	\$35.00
1	TRANSPORTATION	TRANSPORTATION ONE WAY TO:  14200 CHAPMAN RD. SAN LEANDRO, CA 94578	\$433.00
			<b>Sub Total \$21,400.00</b>
			<b>Sales Tax \$0.00</b>
			<b>Total \$21,400.00</b>



2286 E. Date Ave.  
 Fresno, CA 93706  
 Phone: 559-237-5541  
 Fax: 559-237-5554  
 www.SEINC.com

**Quotation**

203879

User: Uribe, Ruben

**DISCLAIMERS**

- TERMS:** Standard terms are Net 10 Days, any deviations need to be in writing before production
- CHANGES:** Each change after quote is accepted will constitute a \$500.00 fee in addition to the cost of the change  
 No changes will be made to orders 2 weeks prior to production start date
- DRAWINGS:** Any changes to drawings after acceptance and 2 weeks prior to production start date will constitute a \$500.00 fee or more at \$150.00 per hour  
 No changes will be made to drawings 2 weeks prior to production start date
- PAINT:** Scelzi Enterprises, Inc. does not guarantee a perfect color match due to inconsistencies in factory paints and procedures

**THIS WORK AUTHORIZED BY**

Payment in full on completion of job if credit arrangements have not been made in advance

The above quotation is submitted according to specifications submitted by customer. Any alterations or changes increasing production costs will be charged for accordingly.

**DATE**

Estimate

Prepared By:

Sales Rep: Uribe,  
 Ruben

## Vehicle Configuration Options

ENGINE	
Code	Description
996	ENGINE: 6.2L 2-VALVE SOHC EFI NA V8 (FLEX-FUEL), (STD)
TRANSMISSION	
Code	Description
44G	TRANSMISSION: TORQSHIFT 10-SPEED AUTOMATIC, -inc: selectable drive modes: normal, tow/haul, eco, deep sand/snow and slippery (STD)
WHEELS	
Code	Description
64K	WHEELS: 17" ARGENT PAINTED STEEL, -inc: Hub covers/center ornaments not included (STD)
TIRES	
Code	Description
TD8	TIRES: LT245/75RX17E BSW PLUS A/S, -inc: Spare may not be the same as road tire (STD)
PRIMARY PAINT	
Code	Description
Z1	OXFORD WHITE
PAINT SCHEME	
Code	Description
___	STANDARD PAINT
SEAT TYPE	
Code	Description
AS	MEDIUM EARTH GRAY, HD VINYL 40/20/40 SPLIT BENCH SEAT, -inc: center armrest, cupholder, storage and driver's side manual lumbar
AXLE RATIO	
Code	Description
X37	3.73 AXLE RATIO, (STD)
ADDITIONAL EQUIPMENT	
Code	Description
90L	POWER EQUIPMENT GROUP, -inc: Deletes passenger side lock cylinder, upgraded door-trim panel, Accessory Delay, Advanced Security Pack, SecuriLock Passive Anti-Theft System (PATS) and inclination/intrusion sensors, MyKey, owner controls feature, Power Locks, Remote Keyless Entry, Folding Trailer <b>760</b> Mirrors w/Power Heated Glass, manual

	telescoping, heated convex spotter mirror and integrated clearance lamps/turn signals, Power Front Side Windows, 1-touch up/down driver/passenger window
52B	TRAILER BRAKE CONTROLLER, -inc: smart trailer tow connector, Verified to be compatible w/electronic actuated drum brakes only
76C	EXTERIOR BACKUP ALARM (PRE-INSTALLED), -inc: Custom accessory
51D	SPARE TIRE & WHEEL DELETE
942	DAYTIME RUNNING LAMPS (DRL), -inc: The non-controllable 942 Daytime Running Lamps (DRL) replace the standard Daytime Running Lamps (DRL) on/off cluster controllable
<b>OPTION PACKAGE</b>	
<b>Code</b>	<b>Description</b>
640A	ORDER CODE 640A

# 2020 Fleet/Non-Retail Ford Super Duty F-350 DRW XL 2WD Reg Cab 145" WB 60" CA

## WINDOW STICKER

2020 Ford Super Duty F-350 DRW XL 2WD Reg Cab 145" WB 60" CA

CODE	MODEL	MSRP
F3G	2020 Ford Super Duty F-350 DRW XL 2WD Reg Cab 145" WB 60" CA	\$36,135.00
<b>OPTIONS</b>		
996	ENGINE: 6.2L 2-VALVE SOHC EFI NA V8 (FLEX-FUEL), (STD)	\$0.00
44G	TRANSMISSION: TORQSHIFT 10-SPEED AUTOMATIC, -inc: selectable drive modes: normal, tow/haul, eco, deep sand/snow and slippery (STD)	\$0.00
64K	WHEELS: 17" ARGENT PAINTED STEEL, -inc: Hub covers/center ornaments not included (STD)	\$0.00
TD8	TIRES: LT245/75RX17E BSW PLUS A/S, -inc: Spare may not be the same as road tire (STD)	\$0.00
Z1	OXFORD WHITE	\$0.00
—	STANDARD PAINT	\$0.00
AS	MEDIUM EARTH GRAY, HD VINYL 40/20/40 SPLIT BENCH SEAT, -inc: center armrest, cupholder, storage and driver's side manual lumbar	\$0.00
X37	3.73 AXLE RATIO, (STD)	\$0.00
90L	POWER EQUIPMENT GROUP, -inc: Deletes passenger side lock cylinder, upgraded door-trim panel, Accessory Delay, Advanced Security Pack, SecuriLock Passive Anti-Theft System (PATS) and inclination/intrusion sensors, MyKey, owner controls feature, Power Locks, Remote Keyless Entry, Folding Trailer Tow Mirrors w/Power Heated Glass, manual telescoping, heated convex spotter mirror and integrated clearance lamps/turn signals, Power Front Side Windows, 1-touch up/down driver/passenger window	\$915.00
52B	TRAILER BRAKE CONTROLLER, -inc: smart trailer tow connector, Verified to be compatible w/electronic actuated drum brakes only	\$270.00
76C	EXTERIOR BACKUP ALARM (PRE-INSTALLED), -inc: Custom accessory	\$140.00
51D	SPARE TIRE & WHEEL DELETE	(\$85.00)
942	DAYTIME RUNNING LAMPS (DRL), -inc: The non-controllable 942 Daytime Running Lamps (DRL) replace the standard Daytime Running Lamps (DRL) on/off cluster controllable	\$45.00
640A	ORDER CODE 640A	\$0.00

Please note selected options override standard equipment

<b>SUBTOTAL</b>	<b>\$37,420.00</b>
Advert/ Adjustments	\$0.00
Manufacturer Destination Charge	\$1,695.00
<b>TOTAL PRICE</b>	<b>\$39,115.00</b>

Est City: N/A MPG  
Est Highway: N/A MPG  
Est Highway Cruising Range: N/A mi

Any performance-related calculations are offered solely as guidelines. Actual unit performance will depend on your operating conditions.

## Standard Equipment

### MECHANICAL

Engine: 6.2L 2-Valve SOHC EFI NA V8 (Flex-Fuel)
Transmission: TorqShift 10-Speed Automatic -inc: selectable drive modes: normal, tow/haul, eco, deep sand/snow and slippery
3.73 Axle Ratio
GVWR: 14,000 lb Payload Package
50-State Emissions System
Transmission w/Oil Cooler
Rear-Wheel Drive
72-Amp/Hr 650CCA Maintenance-Free Battery w/Run Down Protection
HD 200 Amp Alternator
Towing Equipment -inc: Trailer Sway Control
Trailer Wiring Harness
7940# Maximum Payload
HD Shock Absorbers
Front And Rear Anti-Roll Bars
Firm Suspension
Hydraulic Power-Assist Steering
40 Gal. Fuel Tank
Single Stainless Steel Exhaust
Dual Rear Wheels
Front Suspension w/Coil Springs
Leaf Rear Suspension w/Leaf Springs
4-Wheel Disc Brakes w/4-Wheel ABS, Front And Rear Vented Discs and Brake Assist
Upfitter Switches

### EXTERIOR

Wheels: 17" Argent Painted Steel -inc: Hub covers/center ornaments not included
Tires: LT245/75Rx17E BSW PLUS A/S -inc: Spare may not be the same as road tire
Clearcoat Paint
Black Front Bumper w/Black Rub Strip/Fascia Accent and 2 Tow Hooks
Black Side Windows Trim and Black Front Windshield Trim
Black Door Handles
Black Manual Side Mirrors w/Manual Folding
Manual Extendable Trailer Style Mirrors
Fixed Rear Window
Light Tinted Glass
Variable Intermittent Wipers

**764**



Aluminum Panels

Black Grille

Front License Plate Bracket

Autolamp Fully Automatic Aero-Composite Halogen Daytime Running Lights Preference Setting  
Headlamps w/Delay-Off

Cab Clearance Lights

**ENTERTAINMENT**

Radio: AM/FM Stereo w/MP3 Player -inc: 4 speakers

Radio w/Seek-Scan

Fixed Antenna

SYNC Communications &amp; Entertainment System -inc: enhanced voice recognition, 911 Assist, 4.2" LCD center stack screen, AppLink, 1 smart-charging USB-C port and steering wheel audio controls

**INTERIOR**

4-Way Driver Seat -inc: Manual Recline and Fore/Aft Movement

4-Way Passenger Seat -inc: Manual Recline and Fore/Aft Movement

Manual Tilt/Telescoping Steering Column

Gauges -inc: Speedometer, Odometer, Oil Pressure, Engine Coolant Temp, Tachometer, Transmission Fluid Temp, Engine Hour Meter, Trip Odometer and Trip Computer

FordPass Connect 4G Mobile Hotspot Internet Access

Manual Air Conditioning

Illuminated Locking Glove Box

Interior Trim -inc: Chrome Interior Accents

Full Cloth Headliner

Urethane Gear Shifter Material

HD Vinyl 40/20/40 Split Bench Seat -inc: center armrest, cupholder, storage and driver's side manual lumbar

Day-Night Rearview Mirror

Passenger Visor Vanity Mirror

2 12V DC Power Outlets

Front Map Lights

Fade-To-Off Interior Lighting

Full Vinyl/Rubber Floor Covering

Underhood Lights

Smart Device Remote Engine Start

Instrument Panel Covered Bin and Dashboard Storage

Manual 1st Row Windows

Systems Monitor

Trip Computer

Outside Temp Gauge

**765**

Analog Display
----------------

Manual Adjustable Front Head Restraints
---

Air Filtration
----------------

**SAFETY**

Driveline Traction Control
----------------------------

Side Impact Beams
-------------------

Dual Stage Driver And Passenger Seat-Mounted Side Airbags
---

Low Tire Pressure Warning
---------------------------

Dual Stage Driver And Passenger Front Airbags w/Passenger Off Switch
--

Safety Canopy System Curtain 1st Row Airbags
--

Outboard Front Lap And Shoulder Safety Belts -inc: Height Adjusters
---



# National Auto Fleet Group

A Division of Chevrolet of Watsonville

490 Auto Center Drive, Watsonville, CA 95076

(855) 289-6572 • (831) 480-8497 Fax

Fleet@NationalAutoFleetGroup.com

5/19/2020

5/20/2020 Re-Configured

Quote ID: **24093 R1**

Order Cut Off Date: **TBA**

Freddy Barajas  
City of San Leandro  
Equipment Service

14200 Chapman Rd

San Leandro, California, 94578

Dear Freddy Barajas,

National Auto Fleet Group is pleased to quote the following vehicle(s) for your consideration.

**One (1) New/Unused (2020 Ford Super Duty F-350 DRW (F3G) XL 2WD Reg Cab 169" WB 84" CA, Scezli Body Proposal 203918 (details enclosed))** and delivered to your specified location, each for

	<b>One Unit</b>
Contract Price	\$33,586.56
Scezli Body Proposal 203918 (details enclosed)	\$15,335.00
Tax (9.7500 %)	\$4,769.85
Tire fee	\$8.75
<b>Total</b>	<b>\$53,700.16</b>

- per the attached specifications. Price includes 2 additional key(s).

This vehicle(s) is available under the **Sourcewell (Formerly Known as NJPA) Contract 120716-NAF**. Please reference this Contract number on all purchase orders to National Auto Fleet Group. Payment terms are Net 20 days after receipt of vehicle.

Thank you in advance for your consideration. Should you have any questions, please do not hesitate to call.

Sincerely,

Jesse Cooper  
Account Manager  
Email: Fleet@NationalAutoFleetGroup.com  
Office: (855) 289-6572  
Fax: (831) 480-8497



**GMC**

**In order to Finalize your Quote, please submit this purchase packet to your governing body for Purchase Order Approval. Once you issue a Purchase Order please send by:**

**Fax: (831) 480-8497**

**Mail: National Auto Fleet Group  
490 Auto Center Drive  
Watsonville, CA 95076**

**Email: Fleet@NationalAutoFleetGroup.com**

**We will then send a W-9 if you need one**

**Please contact our main office with any questions:  
1-855-289-6572**



2286 E. Date Ave.  
 Fresno, CA 93706  
 Phone: 559-237-5541  
 Fax: 559-237-5554  
 www.SEINC.com

## Quotation

203918

User: Uribe, Ruben

**Bill To:** NATIONAL AUTO FLEET GROUP  
 Attn: CARROLL, NEIL  
 490 AUTO CENTER DR.  
 WATSONVILLE, CA 95076  
 1-855-289-6572

**Ship To:** CITY OF SAN LEANDRO  
 Attn: BARAJAS, FREDDY  
 14200 CHAPMAN RD  
 SAN LEANDRO, CA 94578  
 510-577-3440

<b>Quote Date:</b>	05/20/2020	<b>Salesman:</b>	Uribe, Ruben
<b>Expiration Date:</b>	06/19/2020	<b>Ship Via:</b>	SCENZ DROPSHIP
<b>Sales Tax</b>	Exempt @ 0.000%	<b>Terms:</b>	Net 30 w/ PO
		<b>PO Number:</b>	

<b>Notes:</b>
PAINT BODY WHITE AFT AXLE FUEL TANK

Qty	Part Number	Description	Total	Tax
1	Customer Chassis	2020, FORD F350, REG CAB, WHITE, GAS, DRW 84" CA	\$0.00	
1	SFB 8 X 12	- "NO" TAILPLATE - 3/16" DIAMOND PLATE BED - CROSSMEMBERS ON 12" CENTERS. - ROPE HOOKS ON EACH CROSSMEMBER. - A.J. BAER STAKE POCKETS - SIDES ONLY - L.E.D. SEAL BEAM CLEARANCE LIGHTS OEM TAILLIGHTS. - CALIFORNIA DOCK BUMPER. - PERFORATED HEADBOARD 10 GAUGE SMOOTH STEEL 50/50 NON-CONTOURED WITH 3" CHANNEL UPRIGHTS AND RADIUS CORNERS.  1EA - TOMMYGATE 2000LB CAPACITY LIFTGATE MODEL#G2-92-2050 EA41 WITH 85" x 41" ALUMINUM PLATFORM PLUS 6" TAPER, LED LIGHT KIT AND IN CAB SHUT OFF SWITCH  1EA - CLASS 5 RECEIVER HITCH WITH CLASS 4 REDUCER INSERT  1EA - TRAILER PLUG 7/4 OEM SOCKET  1EA - INSTALL FACTORY BACK UP CAMERA	\$14,837.00	
1	FB-SIDERACK	SET OF 42" TALL STAINLESS STEEL STAKES WITH HARDWOOD SLATS AND WESTERN GATE LATCHES ( SIDES ONLY)	\$0.00	



2286 E. Date Ave.  
 Fresno, CA 93706  
 Phone: 559-237-5541  
 Fax: 559-237-5554  
 www.SEINC.com

## Quotation

203918

User: Uribe, Ruben

2	TOOLBOX	48" X 18" X 18" UNDERBODY RECESSED MOUNTED TOOLBOXES (1EA) SIDE @ FRONT - PAINTED WHITE	\$0.00
1	HAZ MAT - HWD FEE	HAZARDOUS WASTE DISPOSAL FEE	\$30.00
1	WEIGHT CERTIFICATE	WEIGHT CERTIFICATE OF COMPLETED UNIT	\$35.00
1	TRANSPORTATION	ONE WAY TO SAN LEANDRO, CA	\$433.00
<b>Sub Total</b>			<b>\$15,335.00</b>
<b>Sales Tax</b>			<b>\$0.00</b>
<b>Total</b>			<b>\$15,335.00</b>

### DISCLAIMERS

- TERMS:** Standard terms are Net 10 Days, any deviations need to be in writing before produciton
- CHANGES:** Each change after quote is accepted will constitute a \$500.00 fee in addition to the cost of the change  
 No changes will be made to orders 2 weeks prior to production start date
- DRAWINGS:** Any changes to drawings after acceptance and 2 weeks prior to production start date will constitute a \$500.00  
 fee or more at \$150.00 per hour  
 No changes will be made to drawings 2 weeks prior to production start date
- PAINT:** Scelzi Enterprises, Inc. does not guarantee a perfect color match due to inconsistencies in factory paints and  
 procedures

### THIS WORK AUTHORIZED BY

Payment in full on completion of job if credit arrangements have not been made in advance

The above quotation is submitted according to specifications submitted by customer. Any alterations or changes increasing  
 production costs will be charged for accordingly.

### DATE

Estimate  
 Prepared By:

Sales Rep: Uribe,  
 Ruben

## Vehicle Configuration Options

ENGINE	
Code	Description
996	ENGINE: 6.2L 2-VALVE SOHC EFI NA V8 (FLEX-FUEL), (STD)
TRANSMISSION	
Code	Description
44G	TRANSMISSION: TORQSHIFT 10-SPEED AUTOMATIC, -inc: selectable drive modes: normal, tow/haul, eco, deep sand/snow and slippery (STD)
WHEELS	
Code	Description
64K	WHEELS: 17" ARGENT PAINTED STEEL, -inc: Hub covers/center ornaments not included (STD)
TIRES	
Code	Description
TD8	TIRES: LT245/75RX17E BSW PLUS A/S, -inc: Spare may not be the same as road tire (STD)
PRIMARY PAINT	
Code	Description
Z1	OXFORD WHITE
PAINT SCHEME	
Code	Description
___	STANDARD PAINT
SEAT TYPE	
Code	Description
AS	MEDIUM EARTH GRAY, HD VINYL 40/20/40 SPLIT BENCH SEAT, -inc: center armrest, cupholder, storage and driver's side manual lumbar
AXLE RATIO	
Code	Description
X37	3.73 AXLE RATIO, (STD)
ADDITIONAL EQUIPMENT	
Code	Description
90L	POWER EQUIPMENT GROUP, -inc: Deletes passenger side lock cylinder, upgraded door-trim panel, Accessory Delay, Advanced Security Pack, SecuriLock Passive Anti-Theft System (PATS) and inclination/intrusion sensors, MyKey, owner controls feature, Power Locks, Remote Keyless Entry, Folding Trailer Mirrors w/Power Heated Glass, manual

	telescoping, heated convex spotter mirror and integrated clearance lamps/turn signals, Power Front Side Windows, 1-touch up/down driver/passenger window
67E	240 AMP ALTERNATOR
52B	TRAILER BRAKE CONTROLLER, -inc: smart trailer tow connector, Verified to be compatible w/electronic actuated drum brakes only
76C	EXTERIOR BACKUP ALARM (PRE-INSTALLED), -inc: Custom accessory
51D	SPARE TIRE & WHEEL DELETE
18B	PLATFORM RUNNING BOARDS
942	DAYTIME RUNNING LAMPS (DRL), -inc: The non-controllable 942 Daytime Running Lamps (DRL) replace the standard Daytime Running Lamps (DRL) on/off cluster controllable
872	REAR VIEW CAMERA & PREP KIT, -inc: Pre-installed content includes cab wiring and frame wiring to the rear most cross member, Upfitters kit includes camera w/mounting bracket, 20' jumper wire and camera mounting/aiming instructions
18A	UPFITTER INTERFACE MODULE
<b>OPTION PACKAGE</b>	
<b>Code</b>	<b>Description</b>
640A	ORDER CODE 640A



# 2020 Fleet/Non-Retail Ford Super Duty F-350 DRW XL 2WD Reg Cab 169" WB 84" CA

## WINDOW STICKER

2020 Ford Super Duty F-350 DRW XL 2WD Reg Cab 169" WB 84" CA

CODE	MODEL	MSRP
F3G	2020 Ford Super Duty F-350 DRW XL 2WD Reg Cab 169" WB 84" CA	\$36,310.00
<b>OPTIONS</b>		
996	ENGINE: 6.2L 2-VALVE SOHC EFI NA V8 (FLEX-FUEL), (STD)	\$0.00
44G	TRANSMISSION: TORQSHIFT 10-SPEED AUTOMATIC, -inc: selectable drive modes: normal, tow/haul, eco, deep sand/snow and slippery (STD)	\$0.00
64K	WHEELS: 17" ARGENT PAINTED STEEL, -inc: Hub covers/center ornaments not included (STD)	\$0.00
TD8	TIRES: LT245/75RX17E BSW PLUS A/S, -inc: Spare may not be the same as road tire (STD)	\$0.00
Z1	OXFORD WHITE	\$0.00
—	STANDARD PAINT	\$0.00
AS	MEDIUM EARTH GRAY, HD VINYL 40/20/40 SPLIT BENCH SEAT, -inc: center armrest, cupholder, storage and driver's side manual lumbar	\$0.00
X37	3.73 AXLE RATIO, (STD)	\$0.00
90L	POWER EQUIPMENT GROUP, -inc: Deletes passenger side lock cylinder, upgraded door-trim panel, Accessory Delay, Advanced Security Pack, SecuriLock Passive Anti-Theft System (PATS) and inclination/intrusion sensors, MyKey, owner controls feature, Power Locks, Remote Keyless Entry, Folding Trailer Tow Mirrors w/Power Heated Glass, manual telescoping, heated convex spotter mirror and integrated clearance lamps/turn signals, Power Front Side Windows, 1-touch up/down driver/passenger window	\$915.00
67E	240 AMP ALTERNATOR	\$85.00
52B	TRAILER BRAKE CONTROLLER, -inc: smart trailer tow connector, Verified to be compatible w/electronic actuated drum brakes only	\$270.00
76C	EXTERIOR BACKUP ALARM (PRE-INSTALLED), -inc: Custom accessory	\$140.00
51D	SPARE TIRE & WHEEL DELETE	(\$85.00)
18B	PLATFORM RUNNING BOARDS	\$320.00
942	DAYTIME RUNNING LAMPS (DRL), -inc: The non-controllable 942 Daytime Running Lamps (DRL) replace the standard Daytime Running Lamps (DRL) on/off cluster controllable	\$45.00
872	REAR VIEW CAMERA & PREP KIT, -inc: Pre-installed content includes cab wiring and frame wiring to the rear most cross member, Upfitters kit includes camera w/mounting bracket, 20' jumper wire and camera mounting/aiming instructions	\$415.00
18A	UPFITTER INTERFACE MODULE	\$295.00
640A	ORDER CODE 640A	\$0.00

Please note selected options override standard equipment

<b>SUBTOTAL</b>	<b>\$38,710.00</b>
Advert/ Adjustments	\$0.00
Manufacturer Destination Charge	\$1,695.00
<b>TOTAL PRICE</b>	<b>\$40,405.00</b>

Est City: N/A MPG  
Est Highway: N/A MPG  
Est Highway Cruising Range: N/A mi

Any performance-related calculations are offered solely as guidelines. Actual unit performance will depend on your operating conditions.

## Standard Equipment

### MECHANICAL

Engine: 6.2L 2-Valve SOHC EFI NA V8 (Flex-Fuel)
Transmission: TorqShift 10-Speed Automatic -inc: selectable drive modes: normal, tow/haul, eco, deep sand/snow and slippery
3.73 Axle Ratio
GVWR: 14,000 lb Payload Package
50-State Emissions System
Transmission w/Oil Cooler
Rear-Wheel Drive
72-Amp/Hr 650CCA Maintenance-Free Battery w/Run Down Protection
HD 200 Amp Alternator
Towing Equipment -inc: Trailer Sway Control
Trailer Wiring Harness
7330# Maximum Payload
HD Shock Absorbers
Front And Rear Anti-Roll Bars
Firm Suspension
Hydraulic Power-Assist Steering
40 Gal. Fuel Tank
Single Stainless Steel Exhaust
Dual Rear Wheels
Front Suspension w/Coil Springs
Leaf Rear Suspension w/Leaf Springs
4-Wheel Disc Brakes w/4-Wheel ABS, Front And Rear Vented Discs and Brake Assist
Upfitter Switches

### EXTERIOR

Wheels: 17" Argent Painted Steel -inc: Hub covers/center ornaments not included
Tires: LT245/75Rx17E BSW PLUS A/S -inc: Spare may not be the same as road tire
Clearcoat Paint
Black Front Bumper w/Black Rub Strip/Fascia Accent and 2 Tow Hooks
Black Side Windows Trim and Black Front Windshield Trim
Black Door Handles
Black Manual Side Mirrors w/Manual Folding
Manual Extendable Trailer Style Mirrors
Fixed Rear Window
Light Tinted Glass
Variable Intermittent Wipers

**775**

Aluminum Panels
Black Grille
Front License Plate Bracket
Autolamp Fully Automatic Aero-Composite Halogen Daytime Running Lights Preference Setting Headlamps w/Delay-Off
Cab Clearance Lights

**ENTERTAINMENT**

Radio: AM/FM Stereo w/MP3 Player -inc: 4 speakers
Radio w/Seek-Scan
Fixed Antenna
SYNC Communications & Entertainment System -inc: enhanced voice recognition, 911 Assist, 4.2" LCD center stack screen, AppLink, 1 smart-charging USB-C port and steering wheel audio controls

**INTERIOR**

4-Way Driver Seat -inc: Manual Recline and Fore/Aft Movement
4-Way Passenger Seat -inc: Manual Recline and Fore/Aft Movement
Manual Tilt/Telescoping Steering Column
Gauges -inc: Speedometer, Odometer, Oil Pressure, Engine Coolant Temp, Tachometer, Transmission Fluid Temp, Engine Hour Meter, Trip Odometer and Trip Computer
FordPass Connect 4G Mobile Hotspot Internet Access
Manual Air Conditioning
Illuminated Locking Glove Box
Interior Trim -inc: Chrome Interior Accents
Full Cloth Headliner
Urethane Gear Shifter Material
HD Vinyl 40/20/40 Split Bench Seat -inc: center armrest, cupholder, storage and driver's side manual lumbar
Day-Night Rearview Mirror
Passenger Visor Vanity Mirror
2 12V DC Power Outlets
Front Map Lights
Fade-To-Off Interior Lighting
Full Vinyl/Rubber Floor Covering
Underhood Lights
Smart Device Remote Engine Start
Instrument Panel Covered Bin and Dashboard Storage
Manual 1st Row Windows
Systems Monitor
Trip Computer
Outside Temp Gauge

**776**

Analog Display
----------------

Manual Adjustable Front Head Restraints
---

Air Filtration
----------------

**SAFETY**

Driveline Traction Control
----------------------------

Side Impact Beams
-------------------

Dual Stage Driver And Passenger Seat-Mounted Side Airbags
---

Low Tire Pressure Warning
---------------------------

Dual Stage Driver And Passenger Front Airbags w/Passenger Off Switch
--

Safety Canopy System Curtain 1st Row Airbags
--

Outboard Front Lap And Shoulder Safety Belts -inc: Height Adjusters
---

# 203918 - SFB 8' X 12'

- SFB 8' X 12'
- AFT AXLE FUEL TANK
- "NO" TAILPLATE
- 3/16" DIAMOND PLATE BED
- CROSSMEMBERS ON 12" CENTERS
- ROPE HOOKS ON EACH CROSSMEMBER
- A.J. BAER STAKE POCKETS - SIDES ONLY
- L.E.D. SEAL BEAM CLEARANCE LIGHTS
- CALIFORNIA DOCK BUMPER
- INSTALL FACTORY BACK UP CAMERA

TOMMY GATE 2000LB CAPACITY  
LIFTGATE  
MODEL #G2-92-2050 EA41  
WITH 85" X 41" ALUMINUM  
PLATFORM PLUS 6" TAPER AND IN  
CAB SHUT OFF SWITCH

PERFORATED  
HEADBOARD 10GA  
SMOOTH STEEL 50/50  
NON-CONTOURED WITH  
3" CHANNEL UPRIGHTS  
AND RADIUS CORNERS

(2EA) 48" X 18" X 18"  
UNDERBODY RECESSED  
MOUNTED TOOLBOXES,  
DRIVER AND PASSENGER SIDE

42" TALL SIDE RACK SET WITH  
STAINLESS STEEL STAKES,  
HARDWOOD SLATS AND WESTERN  
GATE LATCHES. DRIVER AND  
PASSENGER SIDE ONLY

CLASS 5 RECEIVER HITCH WITH  
CLASS 4 REDUCER INSERT, AND  
TRAILER PLUG 7/4 OEM SOCKET


L.E.D. LIGHT KIT

CUSTOMER SIGNATURE X \_\_\_\_\_

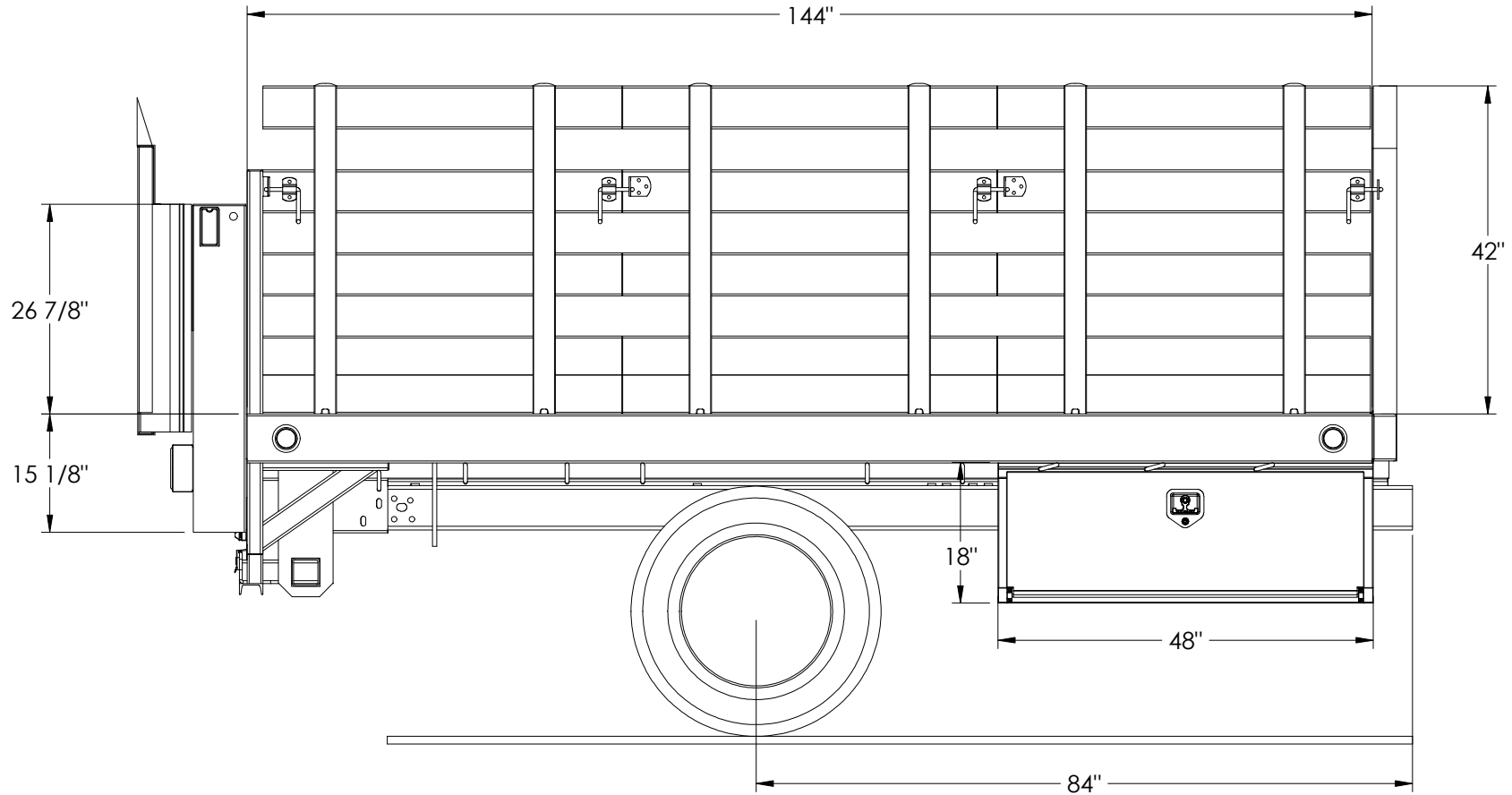
REV.	ECO.	DESCRIPTION OF REVISION	DATE	APPV'D BY:
0	---	DRAWING CREATED	2/4/2019	KDO

THIS DRAWING OR DOCUMENT AND/OR ELECTRONIC DATA, OR COPY THEREOF, IS THE PROPERTY OF SCELZI ENTERPRISES, INC. & IS CONSIDERED PROPRIETARY & CONFIDENTIAL. DISCLOSURE OF THIS INFORMATION IN ANY FORM, IN WHOLE OR IN PART, TO ANY THIRD PARTY IS STRICTLY PROHIBITED WITHOUT THE EXPRESS ADVANCED WRITTEN PERMISSION FROM AN AUTHORIZED REPRESENTATIVE OF SCELZI ENTERPRISES, INC. USERS OF THE INFORMATION CONTAINED HEREIN SHALL TAKE APPROPRIATE MEASURES TO ENSURE THE INFORMATION REMAINS CONFIDENTIAL.

**778**

 <b>SCELZI ENTERPRISES, INC.</b> 2772 S. CHERRY AVE., FRESNO, CA 93706			
DRAWN BY: I.M.	YEAR: 2020	CA: 84"	PART NO:
DATE: 5/26/2020	MAKE: FORD		
SCALE: 1:30	MODEL: F-350		
LAYOUT: 1 OF 5	DWG NAME: BOM LAYOUT		WORK ORDER:
SHEET SIZE: A	203918		<b>203918</b>
DEALER: NATIONAL AUTO FLEET GROUP	CUSTOMER: CITY OF SAN LEANDRO		
DESCRIPTION:		SFB 8' X 12'	

# 203918 - SFB 8' X 12'



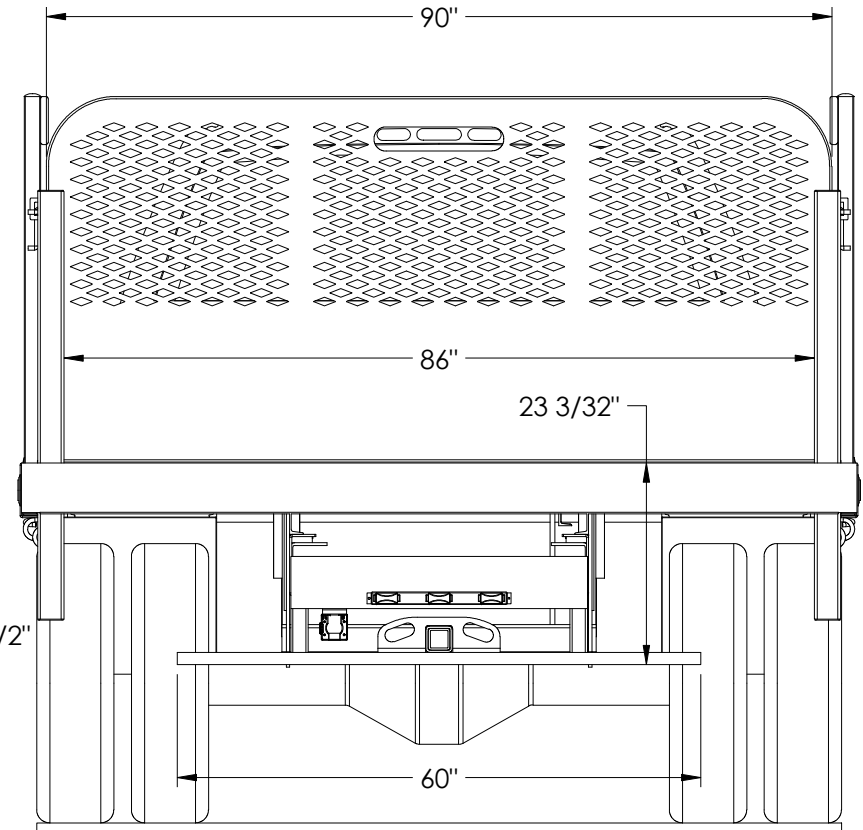
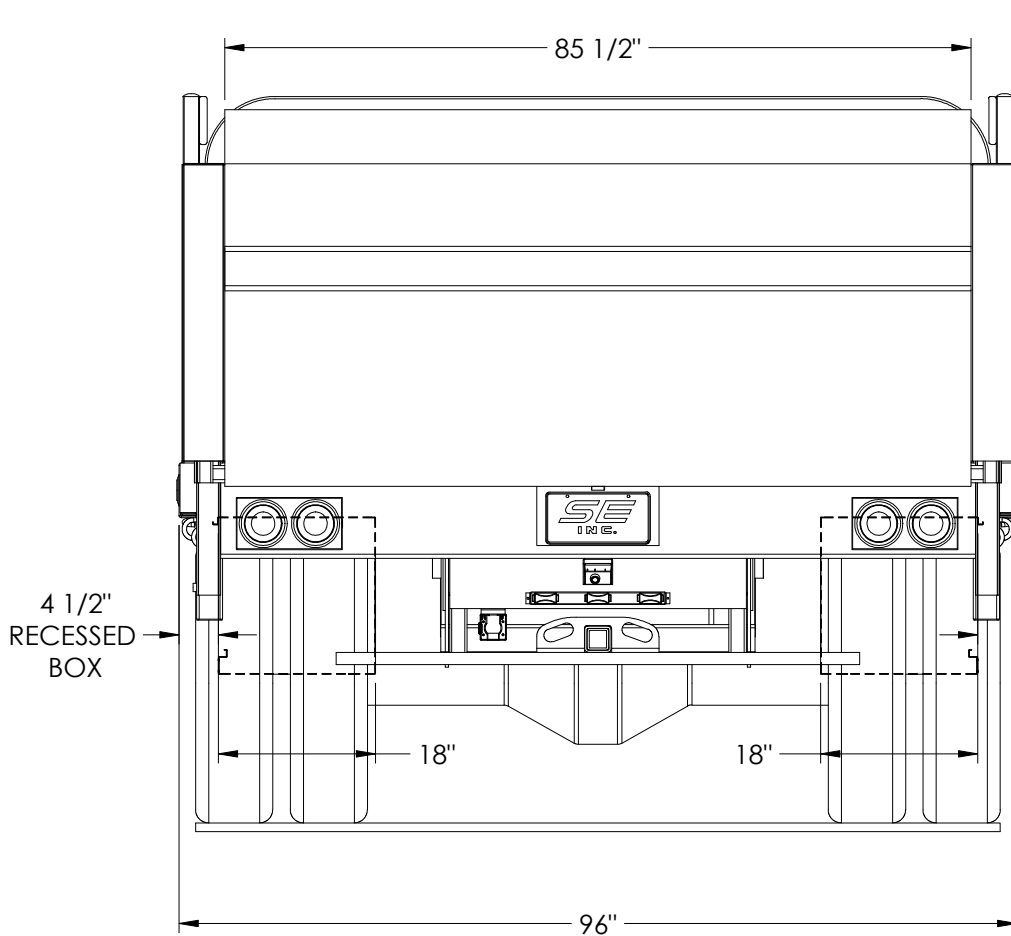
CUSTOMER SIGNATURE X \_\_\_\_\_

REV.	ECO.	DESCRIPTION OF REVISION	DATE	APPV'D BY:
0	---	DRAWING CREATED	2/4/2019	KDO

THIS DRAWING OR DOCUMENT AND/OR ELECTRONIC DATA, OR COPY THEREOF, IS THE PROPERTY OF SCELZI ENTERPRISES, INC. & IS CONSIDERED PROPRIETARY & CONFIDENTIAL. DISCLOSURE OF THIS INFORMATION IN ANY FORM, IN WHOLE OR IN PART, TO ANY THIRD PARTY IS STRICTLY PROHIBITED WITHOUT THE EXPRESS ADVANCED WRITTEN PERMISSION FROM AN AUTHORIZED REPRESENTATIVE OF SCELZI ENTERPRISES, INC. USERS OF THE INFORMATION CONTAINED HEREIN SHALL TAKE APPROPRIATE MEASURES TO ENSURE THE INFORMATION REMAINS CONFIDENTIAL.

**779**

 <b>SCELZI ENTERPRISES, INC.</b> 2772 S. CHERRY AVE., FRESNO, CA 93706			
DRAWN BY: I.M.	YEAR: 2020	CA: 84"	PART NO:
DATE: 5/26/2020	MAKE: FORD		
SCALE: 1:22	MODEL: F-350		WORK ORDER:
LAYOUT: 2 OF 5	DWG NAME: BOM LAYOUT		203918
SHEET SIZE: A	203918		
DEALER: NATIONAL AUTO FLEET GROUP	CUSTOMER: CITY OF SAN LEANDRO		
DESCRIPTION:		SFB 8' X 12'	



**NOTE:** LIFTGATE IS REMOVED IN DRAWING FOR ILLUSTRATION PURPOSES

CUSTOMER SIGNATURE X \_\_\_\_\_

REV.	ECO.	DESCRIPTION OF REVISION	DATE	APPV'D BY:
0	---	DRAWING CREATED	2/4/2019	KDO

THIS DRAWING OR DOCUMENT AND/OR ELECTRONIC DATA, OR COPY THEREOF, IS THE PROPERTY OF SCELZI ENTERPRISES, INC. & IS CONSIDERED PROPRIETARY & CONFIDENTIAL. DISCLOSURE OF THIS INFORMATION IN ANY FORM, IN WHOLE OR IN PART, TO ANY THIRD PARTY IS STRICTLY PROHIBITED WITHOUT THE EXPRESS ADVANCED WRITTEN PERMISSION FROM AN AUTHORIZED REPRESENTATIVE OF SCELZI ENTERPRISES, INC. USERS OF THE INFORMATION CONTAINED HEREIN SHALL TAKE APPROPRIATE MEASURES TO ENSURE THE INFORMATION REMAINS CONFIDENTIAL.

**780**

<b>SCELZI ENTERPRISES, INC.</b> 2772 S. CHERRY AVE., FRESNO, CA 93706			
DRAWN BY: I.M.	YEAR: 2020	CA: 84"	PART NO:
DATE: 5/26/2020	MAKE: FORD		
SCALE: 1:22	MODEL: F-350		WORK ORDER:
LAYOUT: 3 OF 5	DWG NAME: BOM LAYOUT		203918
SHEET SIZE: A	203918		
DEALER: NATIONAL AUTO FLEET GROUP	CUSTOMER: CITY OF SAN LEANDRO		
DESCRIPTION:	SFB 8' X 12'		



**Prepared For:**

City of San Leandro  
 Freddy Barajas  
 835 E 14th St.  
 San Leandro, CA 94577-3782  
 (510)577 - 3376  
 Reference ID: N/A

**Presented By:**

PETERSON TRUCKS, INC  
 George Sharpe  
 2718 TEAGARDEN STREET  
 SAN LEANDRO CA 94577 -  
 (510)618-5550

Thank you for the opportunity to provide you with the following quotation on a new International truck. I am sure the following detailed specification will meet your operational requirements, and I look forward to serving your business needs.

**Model Profile**  
**2021 MV607 SBA (MV607)**

**AXLE CONFIG:** 4X2  
**APPLICATION:** Sewer Vac  
**MISSION:** Requested GVWR: 25999. Calc. GVWR: 25999  
 Calc. Start / Grade Ability: 32.34% / 2.81% @ 55 MPH  
 Calc. Geared Speed: 79.7 MPH

**DIMENSION:** Wheelbase: 152.00, CA: 84.90, Axle to Frame: 63.00  
**ENGINE, DIESEL:** {Cummins B6.7 250} EPA 2017, 250HP @ 2400 RPM, 660 lb-ft Torque @ 1600 RPM, 2600 RPM  
 Governed Speed, 250 Peak HP (Max)

**TRANSMISSION, AUTOMATIC:** {Allison 2500 RDS} 5th Generation Controls, Wide Ratio, 6-Speed with Double Overdrive, with  
 PTO Provision, Less Retarder, with 33,000-lb GVW and GCW Max  
**CLUTCH:** Omit Item (Clutch & Control)

**AXLE, FRONT NON-DRIVING:** {Meritor MFS-10-122A} I-Beam Type, 10,000-lb Capacity  
**AXLE, REAR, SINGLE:** {Dana Spicer S140} Single Reduction, 20,000-lb Capacity, R Wheel Ends Gear Ratio: 6.14  
**CAB:** Conventional, Day Cab  
**TIRE, FRONT:** (2) 11R22.5 Load Range G AH37 (HANKOOK), 501 rev/mile, 75 MPH, All-Position  
**TIRE, REAR:** (4) 11R22.5 Load Range G DH37 (HANKOOK), 498 rev/mile, 75 MPH, Drive  
**SUSPENSION, REAR, SINGLE:** 20,000-lb Capacity, Vari-Rate Springs, with 4500-lb Capacity Auxiliary Rubber Springs  
**PAINT:** Cab schematic 100WP  
 Location 1: 9219, Winter White (Std)  
 Chassis schematic N/A

**Description**

Base Chassis, Model MV607 SBA with 152.00 Wheelbase, 84.90 CA, and 63.00 Axle to Frame.

TOW HOOK, FRONT (2) Frame Mounted

AXLE CONFIGURATION {Navistar} 4x2

FRAME RAILS Heat Treated Alloy Steel (120,000 PSI Yield); 10.125" x 3.580" x 0.312" (257.2mm x 90.9mm x 8.0mm); 460.0" (11684mm) Maximum OAL

BUMPER, FRONT Contoured, Steel

WHEELBASE RANGE 134" (340cm) Through and Including 197" (500cm)

AXLE, FRONT NON-DRIVING {Meritor MFS-10-122A} I-Beam Type, 10,000-lb Capacity

SUSPENSION, FRONT, SPRING Parabolic Taper Leaf, Shackle Type, 10,000-lb Capacity, with Shock Absorbers

BRAKE SYSTEM, AIR Dual System for Straight Truck Applications

AIR BRAKE ABS {Bendix AntiLock Brake System} 4-Channel (4 Sensor/4 Modulator) Full Vehicle Wheel Control System

AIR DRYER {Bendix AD-IP} with Heater

BRAKE CHAMBERS, FRONT AXLE {Bendix} 20 Sqn

BRAKE CHAMBERS, REAR AXLE {Bendix EverSure} 30/30 Spring Brake

BRAKES, FRONT, AIR CAM S-Cam; 15.0" x 4.0"; Includes 20 Sq. In. Long Stroke Brake Chambers

BRAKES, REAR, AIR CAM S-Cam; 16.5" x 7.0"; Includes 30/30 Sq.In. Long Stroke Brake Chamber and Spring Actuated Parking Brake

AIR COMPRESSOR {Cummins} 18.7 CFM

AIR DRYER LOCATION Mounted Outside Right Rail, Forward of Front Wheel

AIR TANK LOCATION (2) : One Mounted Under Each Rail, Front of Rear Suspension, Parallel to Rail

STEERING COLUMN Tilting

STEERING WHEEL 4-Spoke; 18" Dia., Black

STEERING GEAR {Sheppard M100} Power

DRIVELINE SYSTEM {Dana Spicer} 1710, for 4x2/6x2

AFTERTREATMENT COVER Steel, Black

EXHAUST SYSTEM Single, Horizontal Aftertreatment Device, Frame Mounted Right Side Under Cab, for Single Vertical Tail Pipe, Frame Mounted Right Side Back of Cab

ENGINE EXHAUST BRAKE for Cummins ISB/B6.7/ISL/L9 Engine with Variable Vane Turbo Charger

TAIL PIPE (1) Turnback Type

EXHAUST HEIGHT 8' 10"

MUFFLER/TAIL PIPE GUARD (1) Aluminum

ELECTRICAL SYSTEM 12-Volt, Standard Equipment

CIGAR LIGHTER Includes Ash Cup

POWER SOURCE Cigar Type Receptacle without Plug and Cord

ALTERNATOR {Leece-Neville AVI160P2013} Brush Type; 12 Volt 160 Amp. Capacity, Pad Mount, with Remote Sense

BODY BUILDER WIRING Back of Day Cab at Left Frame or Under Sleeper, Extended or Crew Cab at Left Frame; Includes Sealed Connectors for Tail/Amber Turn/Marker/ Backup/Accessory Power/Ground and Sealed Connector for Stop/Turn

**Description**

BATTERY SYSTEM {Fleetrite} Maintenance-Free, (3) 12-Volt 1980CCA Total, Top Threaded Stud

SPEAKERS (2) 6.5" Dual Cone Mounted in Both Doors, (2) 5.25" Dual Cone Mounted in Both B-Pillars

RADIO, AUXILIARY CONTROLS Mounted in Steering Wheel, Radio Function Control Switch, Includes Volume Up/Down, Mute, Forward/Back and Bluetooth Answer/Disconnect

RADIO AM/FM/WB/Clock/Bluetooth/USB Input/Auxiliary Input

HORN, ELECTRIC Disc Style

JUMP START STUD Remote Mounted

WINDSHIELD WIPER SPD CONTROL Force Wipers to Slowest Intermittent Speed When Park Brake Set and Wipers Left on for a Predetermined Time

HEADLIGHTS Halogen, Composite Aero Design, with Daytime Running Lights

CLEARANCE/MARKER LIGHTS (5) {Truck Lite} Amber LED Lights, Flush Mounted on Cab or Sunshade

TEST EXTERIOR LIGHTS Pre-Trip Inspection will Cycle all Exterior Lamps Except Back-up Lights

HEADLIGHTS ON W/WIPERS Headlights Will Automatically Turn on if Windshield Wipers are turned on

INDICATOR, LOW COOLANT LEVEL with Audible Alarm

ALARM, PARKING BRAKE Electric Horn Sounds in Repetitive Manner When Vehicle Park Brake is "NOT" Set, with Ignition "OFF" and any Door Opened

CIRCUIT BREAKERS Manual-Reset (Main Panel) SAE Type III with Trip Indicators, Replaces All Fuses

BATTERY BOX Steel, with Aluminum Cover, 14" Wide, 2-3 Battery Capacity, Mounted Left Side Under Cab

TURN SIGNALS, FRONT Includes LED Side Turn Lights Mounted on Fender

BATTERY DISCONNECT SWITCH 300 Amp, Disconnects Charging Circuits, Locks with Padlock, Cab Mounted

HORN, AIR Single Trumpet, Black, with Lanyard Pull Cord

POWER SOURCE, ADDITIONAL Auxiliary Power Outlet (APO) & USB Port, Located in the Instrument Panel

STARTING MOTOR {Mitsubishi Electric Automotive America 90P47} 12-Volt, with Soft-Start

LOGOS EXTERIOR Model Badges

LOGOS EXTERIOR, ENGINE Badges

GRILLE Chrome

FRONT END Tilting, Fiberglass, with Three Piece Construction

PAINT SCHEMATIC, PT-1 Single Color, Design 100

PAINT TYPE Base Coat/Clear Coat, 1-2 Tone

SPECIAL RATING, GVWR Limited to 25,999-lb GVWR

CLUTCH Omit Item (Clutch & Control)

ANTI-FREEZE Red, Extended Life Coolant; To -40 Degrees F/ -40 Degrees C, Freeze Protection

ENGINE, DIESEL {Cummins B6.7 250} EPA 2017, 250HP @ 2400 RPM, 660 lb-ft Torque @ 1600 RPM, 2600 RPM Governed Speed, 250 Peak HP (Max)

FAN DRIVE {Horton Drivemaster} Automatic On/Off Type, with Normally Closed Temperature Control

RADIATOR Aluminum; 2-Row, Cross Flow, Over Under System, 717 SqIn Louvered, with 313 SqIn Charge Air Cooler. with In-Tank Transmission Cooler

**Description**

AIR CLEANER with Service Protection Element

FEDERAL EMISSIONS {Cummins B6.7} EPA, OBD and GHG Certified for Calendar Year 2020

THROTTLE, HAND CONTROL Engine Speed Control; Electronic, Stationary, Variable Speed; Mounted on Steering Wheel

HOSE CLAMPS, RADIATOR HOSES {R.G. Ray Mini Flex Seal} Coil Spring/"T"-Bolt Type, for Radiator Hoses over 1" I.D.

OIL PAN 15 Quart Capacity, For Cummins ISB/B6.7 Engines

EMISSION COMPLIANCE Low NOx Idle Engine, Complies with California Clean Air Regulations; Includes "Certified Clean Idle" Decal located on Driver Door

ENGINE CONTROL, REMOTE MOUNTED Provision for; Includes Wiring for Body Builder Installation of PTO Controls; with Ignition Switch Control for Cummins ISB/B6.7 or ISL/L9 Engines

TRANSMISSION, AUTOMATIC {Allison 2500 RDS} 5th Generation Controls, Wide Ratio, 6-Speed with Double Overdrive, with PTO Provision, Less Retarder, with 33,000-lb GVW and GCW Max

WIRING, TRANSMISSION Installed Wiring for Transmission/PTO Controls, for Allison 1000, 2000, 2100, 2200, 2400, 2500 Series Transmission

TRANSMISSION OIL Synthetic; 20 thru 28 Pints

TRANSMISSION SHIFT CONTROL T-Handle

NEUTRAL AT STOP Allison Transmission Shifts to Neutral When Service Brake is Depressed and Vehicle is at Stop; Remains in Neutral Until Service Brake is Released

SHIFT CONTROL PARAMETERS {Allison} 1000 or 2000 Series Transmissions, Performance Programming

PTO LOCATION Customer Intends to Install PTO at Left Side of Transmission

AXLE, REAR, SINGLE {Dana Spicer S140} Single Reduction, 20,000-lb Capacity, R Wheel Ends . Gear Ratio: 6.14

SUSPENSION, REAR, SINGLE 20,000-lb Capacity, Vari-Rate Springs, with 4500-lb Capacity Auxiliary Rubber Springs

AXLE, REAR, LUBE {EmGard FE-75W-90} Synthetic Oil; 1 thru 29.99 Pints

FUEL/WATER SEPARATOR 12 VDC Electric Heater, Includes Pre-Heater, Includes Water-in-Fuel Sensor, Cummins Supplied on Engine

FUEL TANK Top Draw, Polished Aluminum, 24" Dia, 50 US Gal (189L), Mounted Left Side, Under Cab

DEF TANK 5 US Gal (19L) Capacity, Frame Mounted Outside Left Rail, Under Cab

FUEL COOLER Less Thermostat; Mounted in Front of Cooling Module

CAB Conventional, Day Cab

AIR CONDITIONER with Integral Heater and Defroster

GAUGE CLUSTER Base Level; English with English Speedometer and Tachometer, for Air Brake Chassis, Includes Engine Coolant Temperature, Primary and Secondary Air Pressure, Fuel and DEF Gauges, Oil Pressure Gauge, Includes 3 Inch Monochromatic Text Display

GAUGE, OIL TEMP, AUTO TRANS for Allison Transmission

IP CLUSTER DISPLAY On Board Diagnostics Display of Fault Codes in Gauge Cluster

SEAT, DRIVER {National 2000} Air Suspension, High Back with Integral Headrest, Vinyl, Isolator, 1 Chamber Lumbar, 2 Position Front Cushion Adjustment, -3 to +14 Degree Seat Back Angle Adjust, Dual Shocks

SEAT, PASSENGER {National 2000} Air-Suspension, High Back with Integral Headrest, Vinyl, Isolator, 1 Chamber Lumbar, 2 Position Front Cushion Adjustment, Dual Shocks

MIRRORS (2) C-Loop, Black Heads and Arms, 7.5" x 14" Flat Glass, Includes 7.5" x 7" Convex Mirrors, for 102" Load Width

CAB INTERIOR TRIM Diamond, for Day Cab

**Description**

CAB REAR SUSPENSION Air Suspension, for Mid Cab Height

ARM REST, RIGHT, DRIVER SEAT

ARM REST, LEFT, PASSENGER SEAT

HOSE CLAMPS, HEATER HOSE {Breeze} Belleville Washer Type

WINDOW, POWER (2) and Power Door Locks, Left and Right Doors, Includes Express Down Feature

INSTRUMENT PANEL Flat Panel

ACCESS, CAB Steel, Driver & Passenger Sides, Two Steps per Door, for use with Day Cab and Extended Cab

WHEELS, FRONT {Accuride 51408} DISC; 22.5x8.25 Rims, Powder Coat Steel, 2-Hand Hole, 10-Stud, 285.75mm BC, Hub-Piloted, Flanged Nut, with Steel Hubs

WHEELS, REAR {Accuride 51408} DUAL DISC; 22.5x8.25 Rims, Powder Coat Steel, 2-Hand Hole, 10-Stud, 285.75mm BC, Hub-Piloted, Flanged Nut, with Steel Hubs

BDY INTG, REMOTE POWER MODULE Mounted Inside Cab Behind Driver Seat, Up to 6 Outputs & 6 Inputs, Max 20 amp per Channel, Max 80 amp Total; Includes 1 Switch Pack with Latched Switches

BDY INTG, REMOTE START/STOP To Start and Stop Vehicle Engine

BDY INTG, PTO ACCOMMODATION for Electric over Hydraulic PTO, Does Not Include Solenoids, with Latched Switch Mounted on Dash Includes Audible Alarm and Indicator Light in Gauge Cluster (Requires 1 Remote Power Module input & 1 output)

BDY INTG, RPM I/O HARNESS Includes a Harness with Six Input Blunt Cut Wires and Six Output Blunt Cut Wires, for use with one RPM

BDY INTG, THROTTLE CONTROL Accommodation for On Demand Engine Speed for Single Customer Mounted Pressure Switch, Programmable Mode for Various Switch Actions, Useable Only While Vehicle is Stopped and the Park Brake is Applied (requires 1 Remote Power Module input)

(2) TIRE, FRONT 11R22.5 Load Range G AH37 (HANKOOK), 501 rev/mile, 75 MPH, All-Position

(4) TIRE, REAR 11R22.5 Load Range G DH37 (HANKOOK), 498 rev/mile, 75 MPH, Drive

**Services Section:**

WARRANTY Standard for MV Series, Effective with Vehicles Built July 1, 2017 or Later, CTS-2020A

**(US DOLLAR)**

**Description**

**Price**

Net Sales Price:

\$121,749.83

Price does not include any applicable taxes or license fees. Please feel free to contact me regarding these specifications should your interests or needs change. I am confident you will be pleased with the quality and service of an International vehicle.

**Body Refurb Description**

Current chassis and rodder shipped to Owen Equipment. New chassis shipped to Owen Equipment. Old rodder installed on new chassis.

Painting of Equipment to be matched as closely as original paint. An exact match cannot be guaranteed

New (2019) Power Take off and Hydraulic Pump Installed

L31HAFCA L31 TITLE XIII FLAT MT AMBER;Amber, Flat Mount, CA Title 13 Compliant  
8-LT FRONT LOAD LINEAR LED T/A;Eight Lamp Linear-LED Traffic Advisor , 45.12" Long  
12 LED FLOOD LT STUD MT BLACK;12 Super-LED Floodlight, Black Housing

RVS-4CAM-A-01 Back Up Camera

Chassis List	\$93,638.00
Options List	\$19,621.00
Total	\$113,259.00
Discount	32.5%
	\$36,809.18
Net Chassis	\$76,449.83
NJPA Partner Body	
Body Refurbishment	\$43,600.00
Additional Post Build Work	\$-
Prep	\$300.00
Detail	\$500.00
Manuals	\$900.00
Total Customer Price	\$121,749.83
Additional Freight	\$150.00
Additional Floorplan	\$800.00
Tire Tax	\$10.50
Doc Fee	\$85.00
DMV Electronic Filing	\$30.00
Sub Total	\$122,825.33
Sales Tax 9.75%	\$11,975.47
Total	\$134,800.79

The 32.5% discount listed above is per Sourcewell/NJPA Contract 081716-NVS

**Approved by Seller:**

**Accepted by Purchaser:**

\_\_\_\_\_  
**Official Title and Date**

\_\_\_\_\_  
**Firm or Business Name**

\_\_\_\_\_  
**Authorized Signature**

\_\_\_\_\_  
**Authorized Signature and Date**

PETERSON TRUCKS, INC  
2718 TEAGARDEN STREET  
SAN LEANDRO CA 94577 -  
(510)618-5550

This proposal is not binding upon the seller without  
Seller's Authorized Signature

---

Official Title and Date

The TOPS FET calculation is an estimate for reference purposes only. The seller or retailer is responsible for calculating and reporting/paying appropriate FET to the IRS.

The limited warranties applicable to the vehicles described herein are Navistar, Inc.'s standard printed warranties which are incorporated herein by reference and to which you have been provided a copy and hereby agree to their terms and conditions.



# City of San Leandro

Meeting Date: June 15, 2020

## Resolution - Council

---

**File Number:** 20-240

**Agenda Section:** CONSENT CALENDAR

**Agenda Number:**

**TO:** City Council

**FROM:** Jeff Kay  
City Manager

**BY:** Debbie Pollart  
Public Works Director

**FINANCE REVIEW:** Liz Warmerdam  
Interim Finance Director

**TITLE:** RESOLUTION of the City of San Leandro City Council to Approve and Authorize the City Manager to Purchase Two- 2020 Model Year Ford Super Duty F-350 XL 2WD Regular Cabs with National Auto Fleet Group for \$53,700.16 and \$58,816.68; to Purchase One- Effer Model 175/5S Articulating Crane Truck with Altec Industries, Inc. for \$205,925.00; and to Purchase One- 2021 Model Year International MV607 SBA Chassis with Peterson Trucks, Inc. for \$134,800.79; all Four of Which Will Be Purchased Through Sourcewell, a Cooperative Contract Purchasing Agency and to Appropriate \$237,948.64 from the Equipment Repair and Maintenance Internal Service Fund Balance to the Vehicle Replacement Fund

---

**WHEREAS**, four separate purchase estimates (one for each piece of equipment) were presented to this City Council; and

**WHEREAS**, the City Council is familiar with the contents thereof; and

**WHEREAS**, the City Manager recommends the purchase of such equipment; and

**WHEREAS**, the equipment replacement funds in the amount of \$215,293.99 are budgeted and available in the Equipment Repair and Maintenance Fund - Vehicle Purchase Account 690-16-002-7510 to pay for the replacement vehicles; and

**WHEREAS**, the Equipment Repair and Maintenance Internal Service Fund balance has \$237,948.64 in funds available to appropriate to the Vehicle Purchase Account to cover the funding gap; and

**WHEREAS**, the purchases are justified because all four trucks are similar in equipment and operation such that operational, maintenance, and repair continuity are assured and vehicle parts for all four trucks are in storage or easily attainable, which will minimize downtime.



**NOW, THEREFORE**, the City Council of the City of San Leandro does **RESOLVE** as follows:

1. That said purchase estimates of \$53,700.16, \$58,816.68, \$205,925.00 and \$134,800.79 (taxes included) substantially in the forms presented are hereby approved and purchase of the equipment by the City Manager is hereby authorized; and
2. That for Fiscal Year 2019-2020 an additional appropriation of funds shall be made from the Equipment Repair and Maintenance Internal Service Fund balance in the amount of \$237,948.64 to account 690-16-002-7510.